

MONTANA STATE UNIVERSITIES  
 OFFICE OF UNIVERSITY SERVICES  
 2012 PLANNING PAK  
 JULY 2012



**MSU Bozeman**

**Year Founded:** 1893

**Fall 2012 Headcount:** 14,153  
**2010-2011 FTE:** 11,820

**Fall 2011 Faculty:** 770 FTE

**Academic Colleges:** Agriculture; Arts and Architecture; Business; Education, Health and Human Development; Engineering; Letters and Science; Nursing and University College; Graduate School; and Gallatin College Programs

**Mascot:** Bobcat

**Athletic Conference:** Big Sky, NCAA Division I

[www.montana.edu](http://www.montana.edu)



**MSU Billings**

**Year Founded:** 1927

**Fall 2012 Headcount:** 5,274  
**2010-2011 FTE:** 4,556

**Fall 2011 Faculty:** 217 FTE

**Academic Colleges:** Allied Health Professions; Arts and Sciences; Business; Education; Professional Studies and Lifelong Learning; and College of Technology

**Mascot:** Yellowjacket

**Athletic Conference:** Great Northern Athletic Conference

[www.msubillings.edu](http://www.msubillings.edu)



**MSU Northern**

**Year Founded:** 1929

**Fall 2012 Headcount:** 1,273  
**2010-2011 FTE:** 1,155

**Fall 2011 Faculty:** 75 FTE

**Academic Colleges:** Arts and Sciences, Business; Education; Nursing; Technical Sciences; Graduate Programs; Extended University

**Mascot:** Polar Bears named "Aurora and Boris"

**Athletic Conference:** Frontier Conference

[www.msun.edu](http://www.msun.edu)



**MSU Great Falls College of Technology**

**Year Founded:** 1969

**Fall 2012 Headcount:** 1,873  
**2010-2011 FTE:** 1,415

**Fall 2011 Faculty:** 72 FTE

**Academic Colleges:** Arts and Sciences; Health Sciences; Business, Technology, and Trades; Extended Learning

[www.msugf.edu](http://www.msugf.edu)



Diagram reproduced from [www.montana.edu/about/system.html](http://www.montana.edu/about/system.html)  
 Student Enrollment and Faculty FTE data from IPEDs

**MSU Facilities Planning, Design, and Construction**

P.O. Box 172760-Bozeman, MT 59717

<http://www.facilities.montana.edu/pdc/planning/>

For more information please contact:

Data Research Analyst

406-994-4213

[www.facilities.montana.edu/pdc](http://www.facilities.montana.edu/pdc)

Montana State University consists of the four-year campus in Bozeman and campuses across the state: a four-year university and two-year College of Technology in Billings, a four-year university in Havre (Northern), and a two-year College of Technology in Great Falls. All of the sites together form a comprehensive academic unit that is part of the Montana University System promoting higher education throughout the state of Montana.

---

### **MSU Vision Statement<sup>1</sup>**

---

Montana State University will be the university of choice for those seeking a student-centered learning environment distinguished by innovation and discovery in a Rocky Mountain setting.

---

### **Mission Statement<sup>1</sup>**

---

*(approved by the Board of Regents 11/2011)*

Montana State University, the State's land-grant institution, educates students, creates knowledge and art, and serves communities, by integrating learning, discovery, and engagement.

---

### **Facilities Services Mission Statement<sup>2</sup>**

---

*Facilities Services is committed to efficient stewardship of MSU's physical environment for the benefit of Higher Education in Montana.*

The Office of Facilities Services at Montana State University is charged with the maintenance and operations of all university buildings, grounds, and infrastructure systems.

Facilities Services consists of five service management areas which include Environmental Services, Administration and University Services, Campus Maintenance, Engineering and Utilities, and Campus Work Control.

---

### **Facilities Planning, Design & Construction Mission Statement<sup>3</sup>**

---

*Provide responsible leadership and systematic guidance to preserve and advance the physical environment of MSU in support of education, research, and community outreach.*

Facilities Planning, Design & Construction (FPDC) at Montana State University is charged with the management of all planning, design, and construction efforts for new structures, renovations, major maintenance, and infrastructure projects for all University facilities. In addition, the office provides space programming, long range campus and facilities planning, project estimating, Long Range Building Program planning, and is the liaison with local, state and federal agencies as related to planning and construction issues. FPDC consists of two service management sections which include Planning (long range planning, space management, data analysis) and Design and Construction (architectural services, project management).

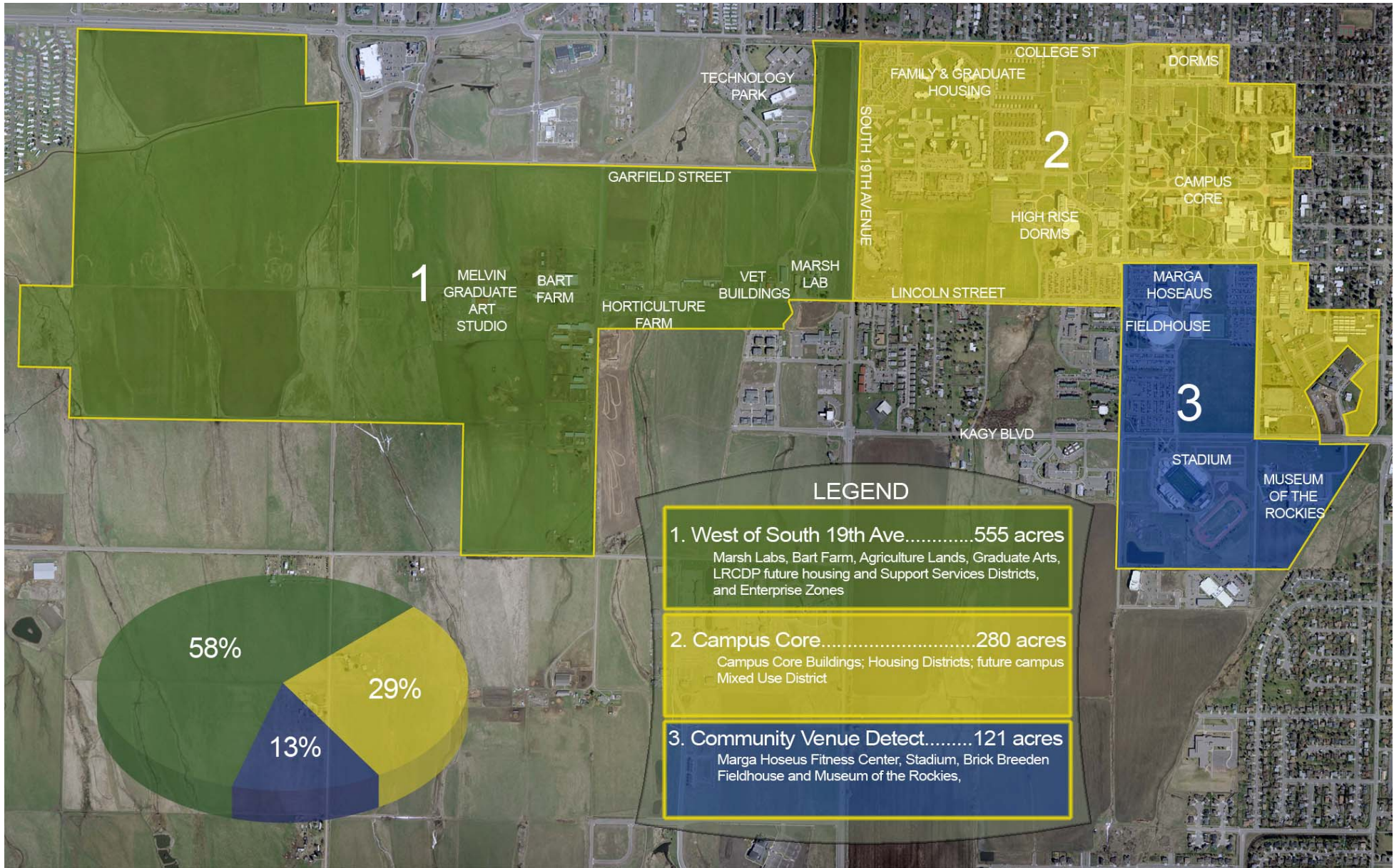
Student enrollment is a very important part of many different aspects of the campus environment. To the budgeting and financial units, student enrollment is a measure of the University's financial position now and into the future. For the planning unit, current and future enrollments influence decision regarding the physical environment.

MONTANA STATE UNIVERSITY BOZEMAN					
STUDENT ENROLLMENT (Fall 2011): <sup>4</sup>					
	Male		Female		Total
Undergraduates:	6,600		5,588		12,188
Graduates:	891		1,074		1,965
<b>Total</b>	<b>7,491</b>	<b>53%</b>	<b>6,662</b>	<b>47%</b>	<b>14,153</b>
Residency Classification (Grad Students Included)			Average Age		
Resident:	9,890	70%	Undergrad:	22	
Non-Resident:	3,779	27%	Graduate:	33	
WUE:	484	3%	Overall:	24	
MSU Bozeman Fall Headcount Enrollment* 2001-11: <sup>5</sup>			MSU Bozeman Annual Student FTE* 2001-11: <sup>6</sup>		
Year	MSU only		Fiscal Year	Amount	
2011**	14,153				
2010**	13,559		2010-11**	11,820	
2009	12,764		2009-10	10,876	
2008	12,369		2008-09	10,509	
2007	12,170		2007-08	10,467	
2006	12,338		2006-07	10,555	
2005	12,250		2005-06	10,642	
2004	12,003		2004-05	10,528	
2003	12,135		2003-04	10,665	
2002	11,934		2002-03	10,674	
2001	11,745		2001-02	10,444	
2000	11,761		2000-01	10,411	
1999	11,753		1999-00	10,402	
*FTE is defined as the annualized Full-Time Equivalent Students, while headcount is an unduplicated "snapshot in in the third week of Fall semester" count of enrolled students in classes whether full or part-time.					
**2010 and 2011 data includes Gallatin College Programs.					

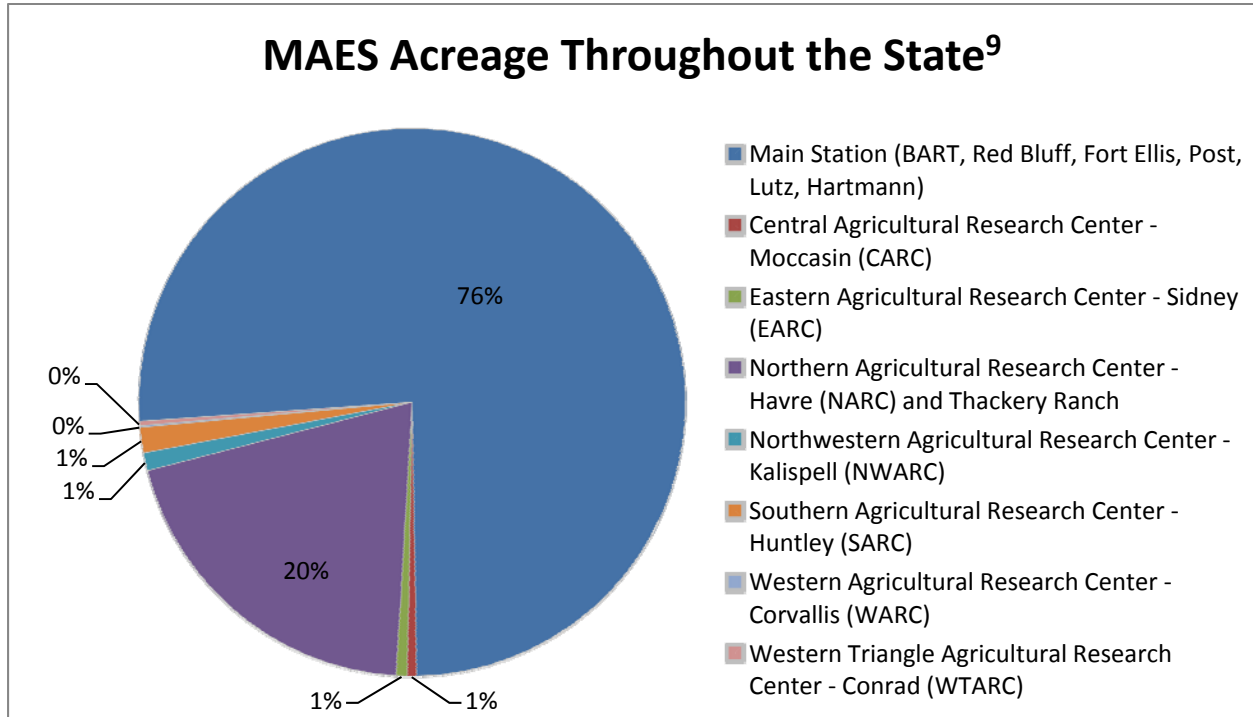
Measure	MSU-BZN		MSU-BIL/COT		MSU-N		MSU-GTF-COT		MAES <sup>2</sup>		TOTALS
	Value	% Share	Value	% Share	Value	% Share	Value	% Share	Value	%Share	includes MAES where appropriate
GSF (State-Supported FY11)	1,989,775	54.7%	650,600	17.9%	320,325	8.8%	216,177	5.9%	460,525	12.7%	3,637,402
FCI GSF (FY11)	1,837,038	57.0%	642,048	19.9%	296,293	9.2%	214,177	6.7%	230,786	7.2%	3,220,342
CRV (2011 State FCI)	\$449,375,926	57.9%	\$145,781,780	18.8%	\$71,497,675	9.2%	\$46,529,953	6.0%	\$63,503,552	8.2%	\$776,688,886
CRV (State FCI Exc. MAES)	\$449,375,926	63.0%	\$145,781,780	20.4%	\$71,497,675	10.0%	\$46,529,953	6.5%	\$0	0.0%	\$713,185,334
FCI (State, Cat 1 & 2)	\$32,435,962	56.3%	\$13,683,791	23.8%	\$9,072,353	15.8%	\$2,371,068	4.1%	na		\$57,563,174
FCI Def Ratio (1&2)	7.2%	na	9.4%	na	12.7%	na	5.1%	na	na		8.1%
Annual FTE (FY11) <sub>3</sub>	11,820	62.4%	4,556	24.0%	1,155	6.1%	1,415	7.5%	0	0.0%	18,946
GSF/Student FTE	155	na	141	na	257	na	151	na	na		173



# MSU BOZEMAN ACREAGE<sup>8</sup>



The Montana Agricultural Experiment Station was established at MSU by Legislative acts in 1893 and the Hatch Act of 1887. The research program encompasses several Montana academic departments, service divisions, and laboratories located at MSU (including BART) and seven locations throughout the state. These field research and outreach facilities provide the opportunity for teaching and learning outside the traditional classroom.



Montana Agricultural Experiment Station:	
<u>Main Station</u>	
Bozeman Agricultural Research & Teaching Farm-Bozeman (BART)	474
Red Bluff Research and Teaching Farm - Norris	10,803
Fort Ellis Research and Teaching Farm - Bozeman	640
Arthur H. Post Agronomy Farm - Bozeman	254
Lutz Farm	560
Hartmann Ranch	9,578
<u>Department of Research Centers</u>	
Central Agricultural Research Center - Moccasin (CARC)	160
Eastern Agricultural Research Center - Sidney (EARC)	192
Northern Agricultural Research Center - Havre (NARC)	1,992
Thackery Ranch	3,900
Northwestern Agricultural Research Center - Kalispell (NWARC)	309
Southern Agricultural Research Center - Huntley (SARC)	443
Western Agricultural Research Center - Corvallis (WARC)	29
Western Triangle Agricultural Research Center - Conrad (WTARC)	76
<u>Total MAES Acreage:</u>	<u>29,410</u>

# MSU Buildings<sup>10</sup>

Building Category	GSF
State supported LRBP eligible	1,939,949
State Supported non-LRBP eligible	121,846
Housing	1,502,316
Non-state, Non-housing, Non-MAES	948,025

## State Supported LRBP Eligible Buildings

Bldg #	Building Name	GSF	Occupy Date
101	MONTANA HALL	39,595	1896
102	TRAPHAGEN HALL	37,433	1920
103	LEWIS HALL	44,188	1923
105	ROMNEY GYM	57,560	1922
107	ROBERTS HALL	49,717	1922
108	TAYLOR HALL	9,938	1896
109	HERRICK HALL	41,286	1926
111	RENNE LIBRARY	158,895	1949
112	MCCALL HALL	10,528	1952
113	AJM JOHNSON HALL	41,622	1954
115	REID HALL	90,982	1959
116	MARSH LAB	31,018	1961
117	GAINES HALL	96,993	1961/2008
118	COOLEY LAB	38,143	1960/2012
119	COBLEIGH HALL	94,262	1970
120	LEON JOHNSON HALL	117,522	1973
122	SHERRICK HALL	18,376	1973
126	HOWARD HALL	31,216	1974
127	CHEEVER HALL	60,500	1974
128	HAYNES HALL	44,600	1974
129	WILSON HALL	80,821	1974
132	VISUAL COMM	41,494	1983
133	TIETZ HALL	20,700	1985
136	CULBERTSON HALL	48,639	1955
139	EPS	151,388	1996
146	BLACK BOX THEATER	14,300	2007
147	ANIMAL BIOSCIENCE	40,634	2010
225	RECORDS MANAGEMENT FACILITY	6,057	2001
301	HAMILTON HALL	28,013	1910
303	HEATING PLANT	11,616	1923
308	FACILITIES HEAT PLANT GENERATOR BLDG	719	1922
309	FACILITIES PAINT BOOTH/SHOP	2,399	1947

(more buildings on next page)



## (More) State Supported LRBP Eligible Buildings

Bldg #	Building Name	GSF	Occupy Date
312	FACILITIES HEAT PLANT STORAGE QUONSET	1,923	1950
314	FACILITIES MOTOR POOL GARAGE	6,715	1952
316	PLEW BUILDING	24,062	1952
319	FACILITIES BUTLER BUILDING	4,328	1958
320	FACILITIES CHEMICAL STORAGE	619	2010
321	FACILITIES REFRIGERATION QUONSET	2,009	1946
322	FACILITIES ELECTRICIANS QUONSET	2,009	1946
323	FACILITIES PLUMBERS QUONSET	2,009	1946
324	FACILITIES LABORERS QUONSET	2,009	1946
325	FACILITIES PREVENTATIVE MAINT QUONSET	2,009	1946
326	FACILITIES CUSTODIAL QUONSET	1,050	1946
327	FACILITIES CUSTODIAL STORAGE QUONSET	971	1946
328	FACILITIES CONFERENCE ROOM QUONSET	971	1946
332	FACILITIES GROUNDS FABRIC STORAGE	2,233	2008
339	FACILITIES GROUNDS SHOP	2,406	1960
347	FACILITIES GROUNDS GREENHOUSE	1,486	1973
348	FACILITIES EQUIPMENT GARAGE	4,954	1947
349	FACILITIES CUSTODIAL LAMP STORAGE QUON	971	1951
350	FACILITIES STORAGE QUONSET	971	1951
351	FS GRNDS EQUIP STOR(DEMO 2008)		1972
352	FACILITIES POLYHOUSE QUONSET	1,487	1984
360	TUNNEL SYSTEM	86,005	1995
400	*PLANT BIOSCIENCE	27,474	1999
401	PLANT GROWTH CENTER	68,107	1986
405	WOOL LAB	7,450	1947
418	ENTOMOLOGY CAGE VILLAGE		1966
419	FACILITIES PUMP HOUSE	175	1985
420	FACILITIES GROUNDS NORTH STORAGE	384	1959
427	FACILITIES GROUNDS SOUTH STORAGE		1961
432	MILLER PAVILION	23,286	1968
433	GRADUATE ARTS STUDIOS	6,000	1968
441	HUFFMAN BUILDING	8,843	1969
442	FACILITIES CARPENTER SHOP	2,455	1969
448	MOLECULAR BEAM FACILITY	1,459	1972
469	ARBORETUM INTERPRETIVE CENTER	848	1985
527	1106 S 6TH AVENUE	1,854	1950
530	FACILITIES CAMPUS STORES	4,153	1978
610	AGRONOMY FIELD HOUSE	1,468	1934
630	KELLOGG CENTER	3,704	1944
104101	LINFIELD HALL NORTH	38,705	1909
104102	LINFIELD HALL SOUTH	31,233	1952
	<b>Total SF</b>	<b>1,939,949</b>	

\*only 50% of Plant Bioscience square footage is listed above as LRBP Eligible

# Parking Spots<sup>11</sup>

LOT	Permit	ADA	Reserve	Service	30 min	15 min	Other	Pay	Total	Lost
Ag/Bio Shed	3								3	
Antelope	320								320	
Bobcat Circle	22	1			7				30	
Deer	170	2							172	
East Linfield	53	8	55	2	1				119	
F	682								682	
Faculty Court	48	2							50	
Fee Lot		2						132	134	
Garfield	24								24	
Greenhouse	179	7	8	0	0		1		195	50
Hamilton		12	31		2		1		46	
Hapner Bakery	4	1							5	
Harrison Street (E)	21								21	
Harrison St. (W)	62	5					4		71	
Herrick Hall				2		8			10	
Huffman	213	1	13		4		6		237	
Johnstone Center	7			17			2		26	
Langford	145	1		2					148	
Lewis and Clark	103	4							107	
New Buildings		2		3	2				7	
New Gatton	237								237	
N. Fieldhouse	194	10	38		2				244	
North Hedges	314	4		3	2				323	
Old Gatton	212	5	63				2		282	
Old Gatton Res.		0	0						0	
Plant/Growth		5		3					8	
Quads	43	2							45	
Roberts		10	15						25	
Roskie	477	8			11				496	
SOB Barn	11	1			2				14	
South 12th	262	2							264	
South 12th Ave.		5			16				21	
South 5th Ave.	63								63	
South 6th Ave.	11								11	
South 7th Res.		2	38						40	
S. 7th Ave. (N)	27								27	
S. 7th Ave. (S)	58								58	
South 8th Ave.	35								35	
S. Fieldhouse	263	11			8				282	
South Hedges	258	8							266	3
SUB West		5		4	4				13	
SUB East		15		5			4		24	
West Linfield	164	4	42						210	
Total	4685	145	303	41	61	8	20	132	5395	53

## REFERENCES

- 1 MSU's Vision, Missions and Strategic Priorities. Montana State University Office of the President. 2 May 2012.  
< <http://www.montana.edu/president/prescomm/mission.html> >
- 2 Facilities Services Mission Statement. Montana State University. 4 May 2012.  
<<http://www.facilities.montana.edu/fs/>>
- 3 Planning, Design, & Construction Mission Statement. Montana State University. 4 May 2012.  
<<http://www.facilities.montana.edu/pdc/>>
- 4 Full and Part-Time Enrollment. Montana State University: Office of Planning & Analysis. 4 May 2012.<<http://www.montana.edu/opa/facts/quick.html>>
- 5 Fall Headcount-Unduplicated Enrollment. Montana University System. 8 Dec 2011.  
<<http://mus.edu/data/enrollment/enrollment.asp> >
- 6 Annual Average Student FTE, FY 2001-2011: Summary Report. Montana University System. 8 Dec 2011.  
<<http://www.mus.edu/data/enrollment/enrollment.asp>>
- 7 LRBP Consolidated Projects List. Montana State University-Bozeman: Facilities Planning, Design & Construction. 4 October 2012.
- 8 Montana State University-Bozeman: Facilities Planning, Design, and Construction; Matthew Hume and Gary Gramer, Oct 5, 2010.
- 9 Montana State University-Bozeman: Office of the Dean of Agriculture, Lisa Duffey, August 30, 2010.
- 10 AiM Preload Data. Montana State University-Bozeman: Facilities Services, Patty Yasbek, October 4, 2012.
- 11 Montana State University-Bozeman: Parking, Kurt Blunck, October 4, 2012.